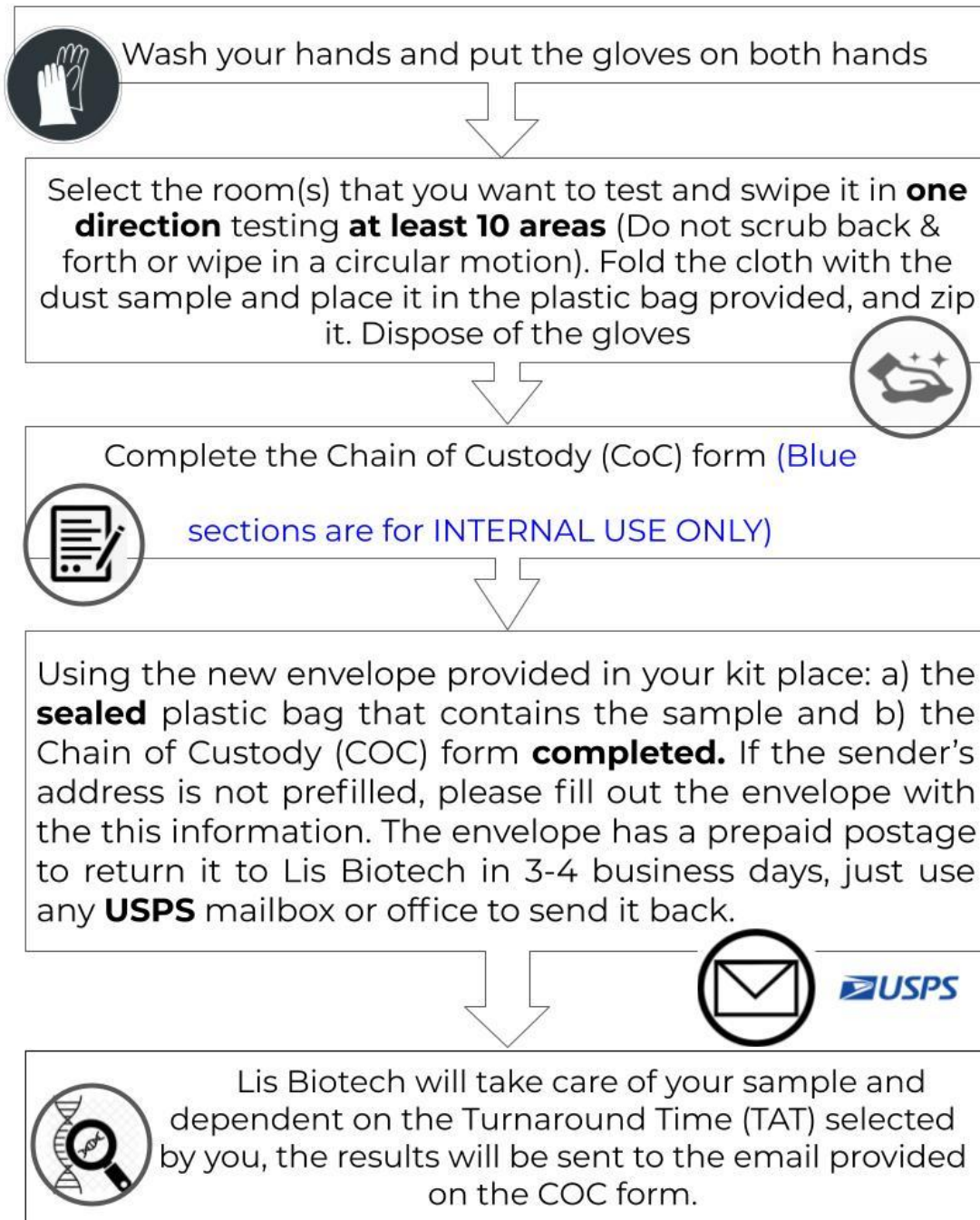


# How do I take dust samples with sampling cloth?

By purchasing the analysis service by Lis Biotech you have received a dust collection kit that contains: **1 pair of gloves, 1 unscented dry cloth (per analysis), 1 envelope, and a Chain of Custody (CoC) form.**

PLEASE FOLLOW THE NEXT STEPS:



**Details on the back**



# How do I take dust samples with sampling cloth?

---

**DO SAMPLE AREAS** like tops of interior door frames, moldings, entertainment centers, shelves, dressers, nightstands, and HVAC return vents.

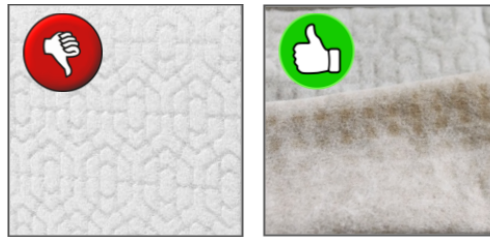
**DO NOT** sample bathrooms, laundry rooms, or kitchens.

**DO NOT** sample directly from a visible mold source.

**DO NOT** sample rusty areas, areas with clay or drywall dust from construction/repair.

**DO NOT** sample areas near stoves, heaters, or other high heat sources.

**The test will be ran on the dust extracted from the cloth so, make sure the cloth is visibly dirty.** Continue swiping areas if the cloth is not dirty enough.



**Bad Sampling**

**Good Sampling**

Not gathering enough sample can produce non-accurate results.

**DO NOT** place the COC form inside the plastic bag with the sample.

The Turnaround Time (TAT) 1, 2, 3, or 5 days is dependent upon the purchase made online. If you prefer to use another mail service to send your sample to our lab, please mail it to:

**Lis Biotech LLC**  
**4242 Medical Drive, Building 7, Suite 7325**  
**San Antonio, Texas 78229.**